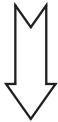


RYCO FILTERS

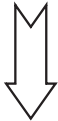


FITTING INSTRUCTIONS FOR RYCO CABIN FILTER RCA109P. HOLDEN ASTRA (FILTER LOCATED BEHIND GLOVE BOX)

1: Remove 3 screws from bottom of glove box as shown using special tool.



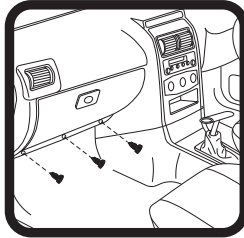
2: Remove 3 screws from top of glove box as shown using special tool.



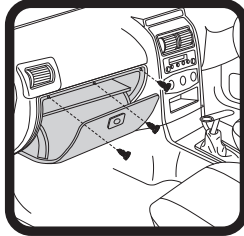
3: Remove glove box after disconnecting electrical connections at A.



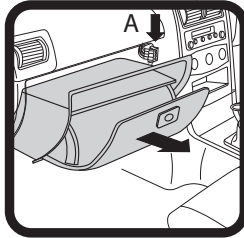
4: Undo screw or clips, remove used filter noting direction of flow arrow on side of filter.



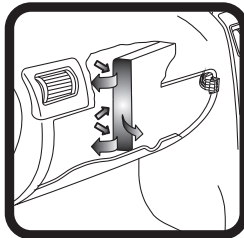
8: Replace 3 screws in bottom of glove box as shown



7: Replace 3 screws in top of glove box as shown



6: Reconnect electrical connection and replace glove box.



5: Fit new RYCO filter, note direction of flow arrow on side of filter.



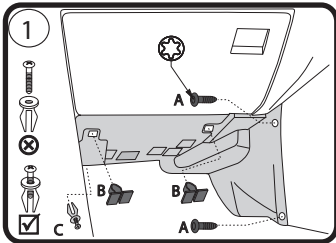
Ryco Group Pty Ltd
29 Taras Ave, Altona North
Victoria 3025 Australia.
www.rycofilters.com.au

Ryco Group
A Division of GUD NZ Holdings Ltd
626A Rosebank Road, Avondale
Auckland New Zealand
www.ryco.co.nz

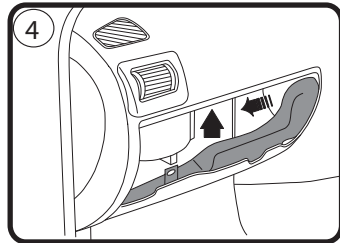
RYCO FILTERS



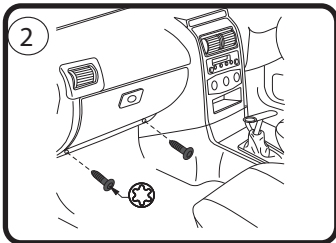
FITTING INSTRUCTIONS FOR RYCO CABIN FILTER RCA109P. HOLDEN ZAFIRA (FILTER LOCATED BEHIND GLOVE BOX)



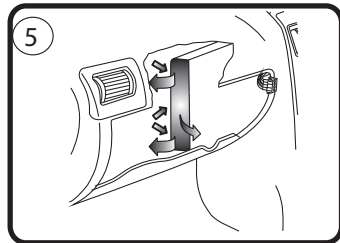
1: Remove 2 screws (A) using special tool, remove 2 clips (B), remove toggle bolt (C) then remove cover.



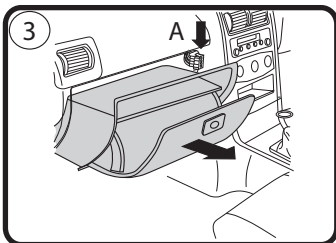
4: Pull cover to left and then lift out.



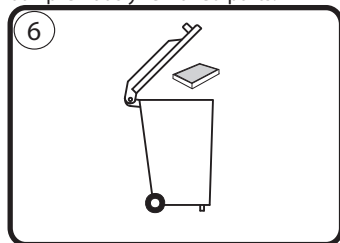
2: Remove 2 screws from bottom of glove box using special tool.



5: Undo screw or release clips, open housing and remove used filter, note flow direction, fit new RYCO filter refit all previously removed parts.



3: Disconnect electrical connection "A" then remove glove box.



6: Dispose of used filter correctly.

Ryco Group Pty Ltd
29 Taras Ave, Altona North
Victoria 3025 Australia.
www.rycofilters.com.au

Ryco Group
A Division of GUD NZ Holdings Ltd
626A Rosebank Road, Avondale
Auckland New Zealand
www.ryco.co.nz