

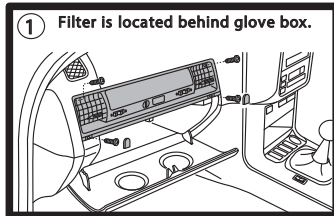
RYCO FILTERS



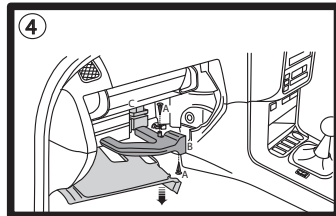
FITTING INSTRUCTIONS FOR RYCO CABIN FILTER RCA121P.

BMW 3 Series E36.

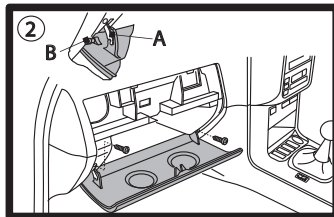
(Filter is located behind glove box)



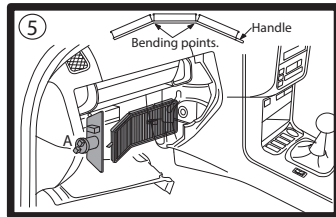
Set ventilator to "0" remove 2 screws, open the glove box, lever out the caps and remove 2 screws from underneath noting their original position, pull out the ventilator panel.



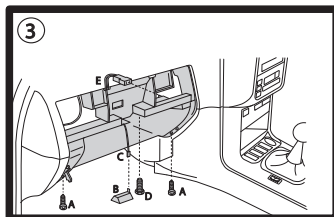
Push the cover down, pull out the 2 plastic pegs (A), pull out the air duct (B) and lift out, move the cable assembly to one side and push the connector block (3) up and out of the holder.



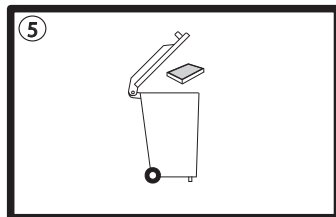
Unclip the retainer for the glove box lid (A), unclip left hand side hinge (B) and lift out the lid, remove 2 screws next to hinges.



Turn the handle (A) on the duct cover 90°, in an anti-clockwise direction, remove the cover and pull the used filter out by bending at the two folding points, bend the new filter and push into housing with the handle facing outwards.



Remove the 2 screws (A) and light (B), pull the plug off the light (C), remove the hex headed bolt (D) and pull out the glove box, pull off the plug (E) on the back of the glove box.



Refit all previously removed components in reverse sequence.

Dispose of used filter correctly.

Ryco Group Pty Ltd
29 Taras Ave, Altona North
Victoria 3025 Australia.
www.rycofilters.com.au

Ryco Group
A Division of GUD NZ Holdings Ltd
626A Rosebank Road, Avondale
Auckland New Zealand
www.ryco.co.nz