

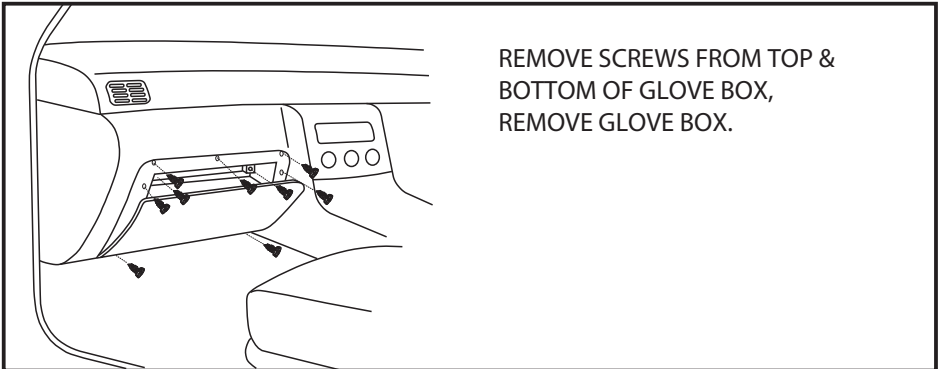
RYCO FILTERS



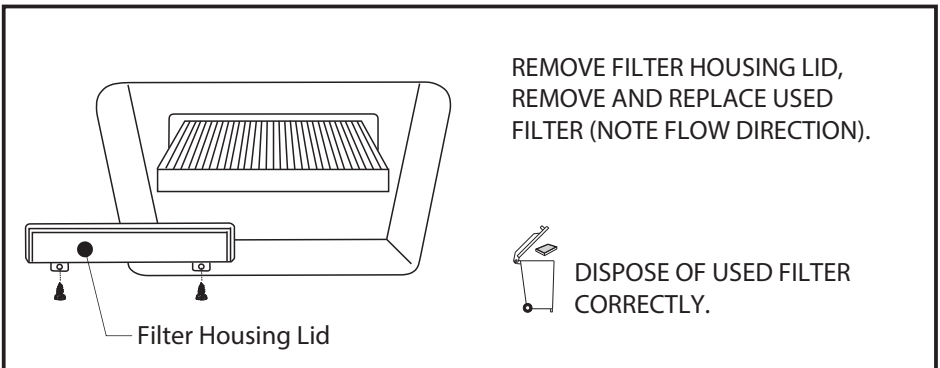
FITTING INSTRUCTIONS FOR RYCO CABIN FILTER RCA196P.

2005-08 SUBARU FORESTER, 2003-04 IMPREZA, 2006-07 IMPREZA OUTBACK
SPORT, IMPREZA 2.5 RS, IMPREZA WRX STi, 2004-07 IMPREZA WRX.

(Filter is located behind glove box)



REMOVE SCREWS FROM TOP &
BOTTOM OF GLOVE BOX,
REMOVE GLOVE BOX.



REMOVE FILTER HOUSING LID,
REMOVE AND REPLACE USED
FILTER (NOTE FLOW DIRECTION).



DISPOSE OF USED FILTER
CORRECTLY.

Filter Housing Lid

TOOL BOX = PHILLIPS HEAD or STANDARD SCREW DRIVER.

RYCO Group Pty Ltd
29 Taras Ave Altona North
Victoria 3025 Australia.
www.rycofilters.com.au

RYCO Group -
A division of GUD (NZ) Holdings Limited
626A Rosebank Road Avondale
Auckland, New Zealand
www.ryco.co.nz