

RYCO TRANSMISSION FILTER PAN - RTK314, RTK315 & RTK316

- Install the oil pan and attach all screws until they just make contact with the pan. First, screw all the screws in slightly and then gently shake the oil pan so that the center hole of the oil pan is aligned with the center hole of the gearbox.
- After all screws are installed, tighten screws in order 1 through 13 as shown in the schematic. The tightening torque for the first pass is 4nm.
- After tightening them all, based on the last 4nm, continue to rotate 45 degrees and tighten the screws one by one in diagonal position again.

Tightening torque for screws on a Plastic oil pan = 10 nm \pm 1.0 Nm.

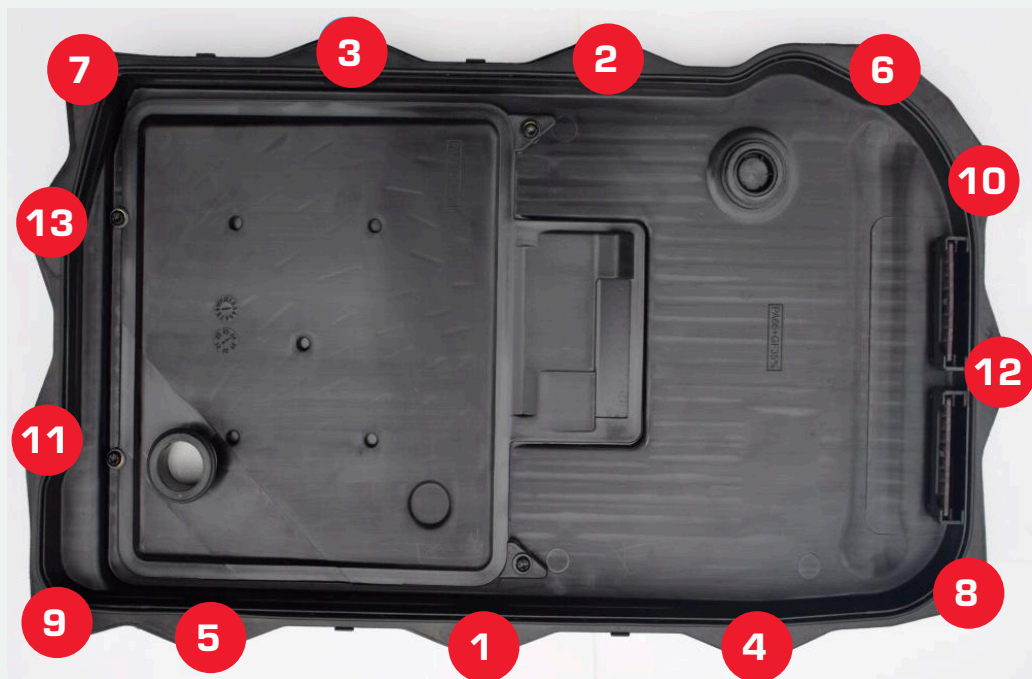


FIGURE 1