

RYCO FILTERS

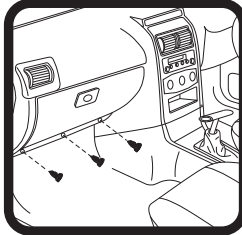


FITTING INSTRUCTIONS FOR RYCO CABIN FILTER RCA114P/C/MS

HOLDEN ASTRA

(Filter is located behind glove box)

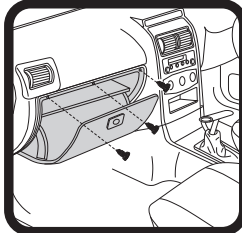
1: Remove 3 screws from bottom of glove box as shown



8: Replace 3 screws in bottom of glove box as shown



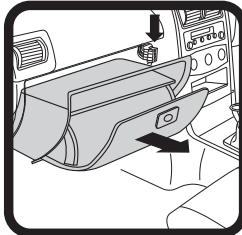
2: Remove 3 screws from top of glove box as shown



7: Replace 3 screws in top of glove box as shown



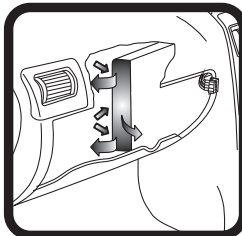
3: Remove glove box after disconnecting electrical connections.



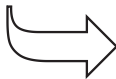
6: Reconnect electrical connection and replace glove box.



4: Remove used filter, note direction of flow arrow on side of filter.



5: Fit new RYCO filter, note direction of flow arrow on side of filter.



Ryco Group Pty Ltd
29 Taras Ave, Altona North
Victoria 3025 Australia.
www.rycofilters.com.au

Ryco Group
A Division of GUD NZ Holdings Ltd
626A Rosebank Road, Avondale
Auckland New Zealand
www.ryco.co.nz