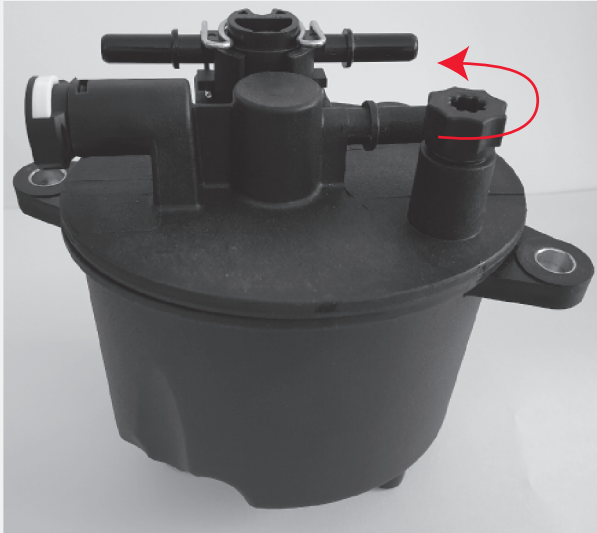
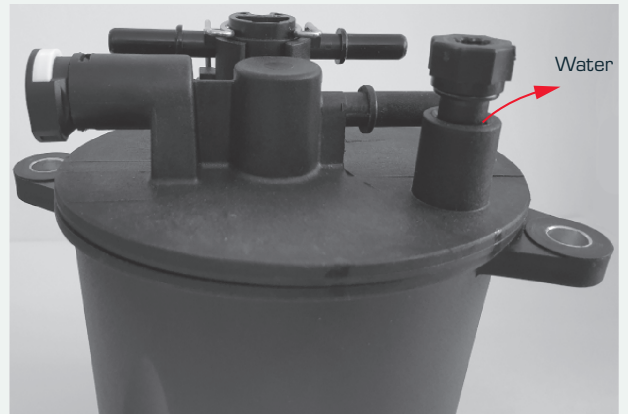


RANGE ROVER / JAGUAR / PEUGEOT / CITROEN

NOTE: ENGINE MUST BE RUNNING DURING THE DRAIN & PURGE PROCEDURE.



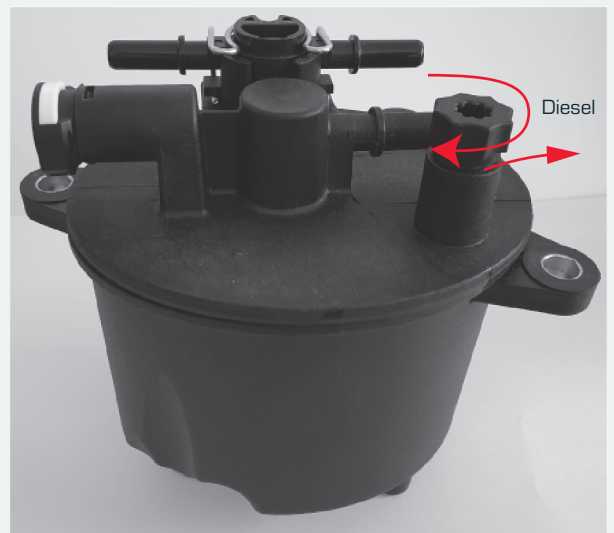
STEP 1
Turn the drain screw counter clockwise until the O-ring is free from its groove.



STEP 2
Separated water should come from the drain screw at the top of the filter.



STEP 3
Trapped air should come out during purging phase from the top of the filter.

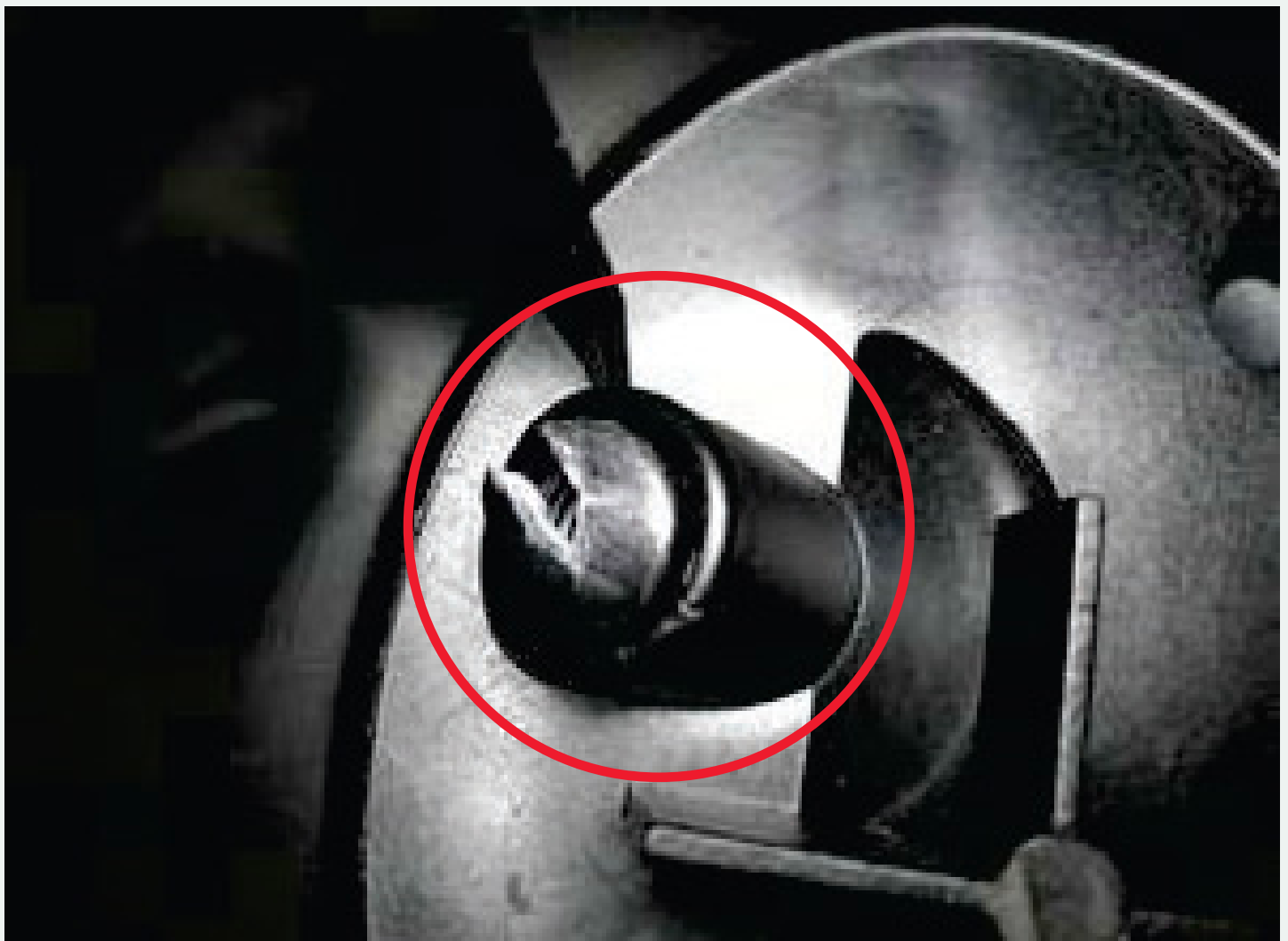


STEP 4
Turn the drain screw clockwise when diesel starts to flow out, ensure that the drain is then tight enough and not leaking.

RANGE ROVER / JAGUAR / PEUGEOT / CITROEN

NOTE: ENGINE MUST BE RUNNING DURING THE DRAIN & PURGE PROCEDURE.

IMPORTANT: When changing the filter, remove the sensor from the previous filter and plug it into the new filter. Screw in the sensor all the way so that it penetrates throughout the plastic wall. A resistance should be felt when breaking the seal.



BROKEN SEAL INSIDE FILTER HOUSING